

## TITAN ENTRANCE MAT, INSTALLATION INSTRUCTIONS

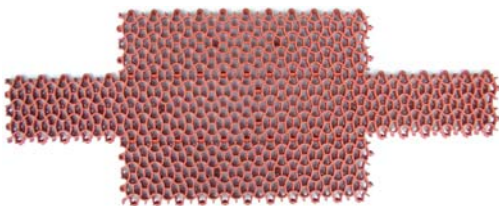
Surface should be relatively flat, smooth and level. Brush the surface area where Titan mats are to be installed. Prior to installation the base should be thoroughly cleaned and any sharp objects removed. Sweep or brush area to remove all loose dirt and dust.

Titan matting can be loose laid on a flat surface, or placed into an existing mat well.

The matting should be unrolled on site with the drainage on the bottom face and positioned in accordance with the layout plan.

Larger mat should be built in several sections. This ensures both straightforward installation and easy cleaning of mats for extra life.

Connect Titan tiles as shown below and make the cutting line in the walking direction between the connectors. Cutting line crosswise in the walking direction can be made in any place.



Take accurate measurements of the matting area. Please note the walking direction. When Titan mat is installed in the recessed well, expansion allowance of 2 % should be added to the length of the mat in the walking direction, because the mat is shrinking slightly in use. Expansion allowance is not needed to breadth of the mat.



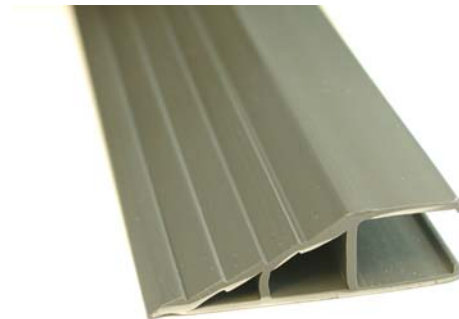
Take note of holes, posts, radiators etc. If mats need to be cut, make necessary cuts first on site. Fit each mat into place and make necessary cuts with snap-off knife or secateurs.

### ACCESSORIES:

#### *Plastic edging 16 mm*

Plastic edging is specially designed for surface mounted applications on finished floor surfaces and for indoor and outdoor conditions.

The bevelled surface of the edging minimizes the possibility of tripping and allows use of wheeled carts. It withstands heavy loads and is suitable for medium wheeled traffic.



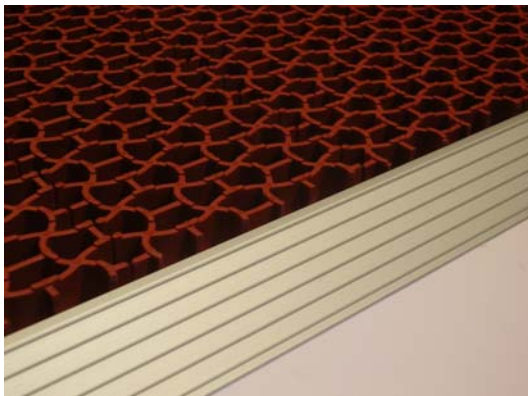
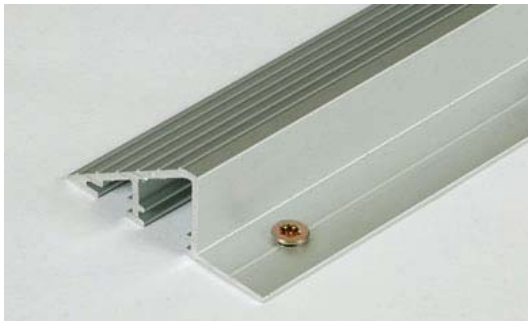
#### *Aluminium edging 16/20 mm*

Aluminium edging is specially designed for surface mounted applications on finished floor surfaces and for indoor and outdoor conditions.

The bevelled surface of the edging minimizes the possibility of tripping and allows use of wheeled

carts. It withstands heavy loads and is suitable for heavy wheeled traffic.

Aluminium edging shall be screwed into the floor. It can also be assembled as a frame surrounding the entrance mat on all four sides.



### **Installation anchors**

Installation anchors are used to secure sections of mats to floor.

If there is a risk that entrance mats might move due to heavy foot or trolley traffic, installation anchors prevent mats from moving and sliding around.



It is recommended to use installation anchors, when mat is longer than 3 m. Anchors shall be installed only to the first and last row of tiles (in the walking direction of the mat), one anchor per one tile.

If entrance mat will be placed with anchors onto a concrete floor, lay the mat in place, mark the screw hole positions, then drill holes for rawl plugs in concrete floor and plug. Insert anchor in tile and screw tight.

Screws and rawl plugs are not supplied with the anchors. It is recommended to use screw 3,5x50 mm and rawl plug N5-50.



Mat is easy to roll up for the cleaning, because anchors are not fastened to the mat.