

CLEANING AND MAINTENANCE RECOMMENDATIONS FOR SILVER RIB ENTRANCE MAT

The performance of entrance matting system is dependent how well it is maintained. Entrance mat and matwell should be regularly cleaned and maintained to ensure that the mat maintains its effective performance, as well as ensuring a long life span for the product.

A planned maintenance programme should be developed in relation to the amount of traffic passing over the entrance mats.

The frequency of cleaning will depend on traffic volume. The greater the amount of traffic, the stricter the cleaning regime should be. As a general rule the mats should be rolled up and matwell vacuumed weekly in heavy traffic areas.

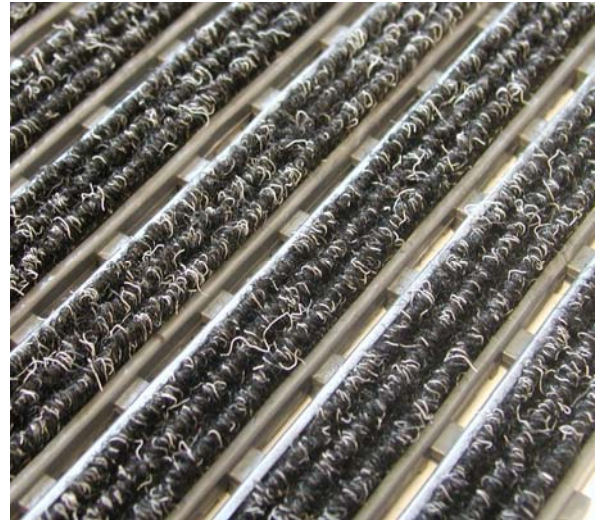
During summer, maintenance level may not need to be so intensive as during winter months.

Silver Rib entrance mat has open construction. Open construction provides spaces for dirt and moisture to fall through the matting into the matwell base.

Entrance mats will need to be rolled up periodically to allow the matwell to be thoroughly vacuumed. All stones and grit particles should be picked up.



Silver Rib entrance mat is designed to collect dirt, dust and sand and hide them in the mat.



Regular cleaning of the mat is recommended in order to keep the mat looking new and maintaining a presentable entrance.

Top surface of Silver Rib entrance mat is easy to clean by using a powerful vacuum cleaner.



If necessary, hose down the mat with a garden hose or spray down with high pressure washer.

Connections of Silver Rib modular tiles should be checked and damaged tiles should be replaced immediately. Due to interlocking modular system, it is very easy and inexpensive to replace a damaged tile with a new one.

