

## COMBO 16 mm

Combo 16 mm is extremely strong matting for a long life span in demanding indoor and outdoor conditions. Open design of lamellas allows debris fall through the tile. A functional Combo 16 mm entrance matting system stops dirt, sand and debris in the entrance area.

Combo 16 mm provides maximum undershoe brushing as well as dirt removal. Tiles have open grid yet heel proof construction. Lightweight Combo is easy to handle and roll up for maintenance and cleaning.



*Combo 16 mm heelproof entrance mat has elegant and stylish design.*

### **Muovihaka**

Kuusimäentie 12, 01900 Nurmijärvi, FINLAND

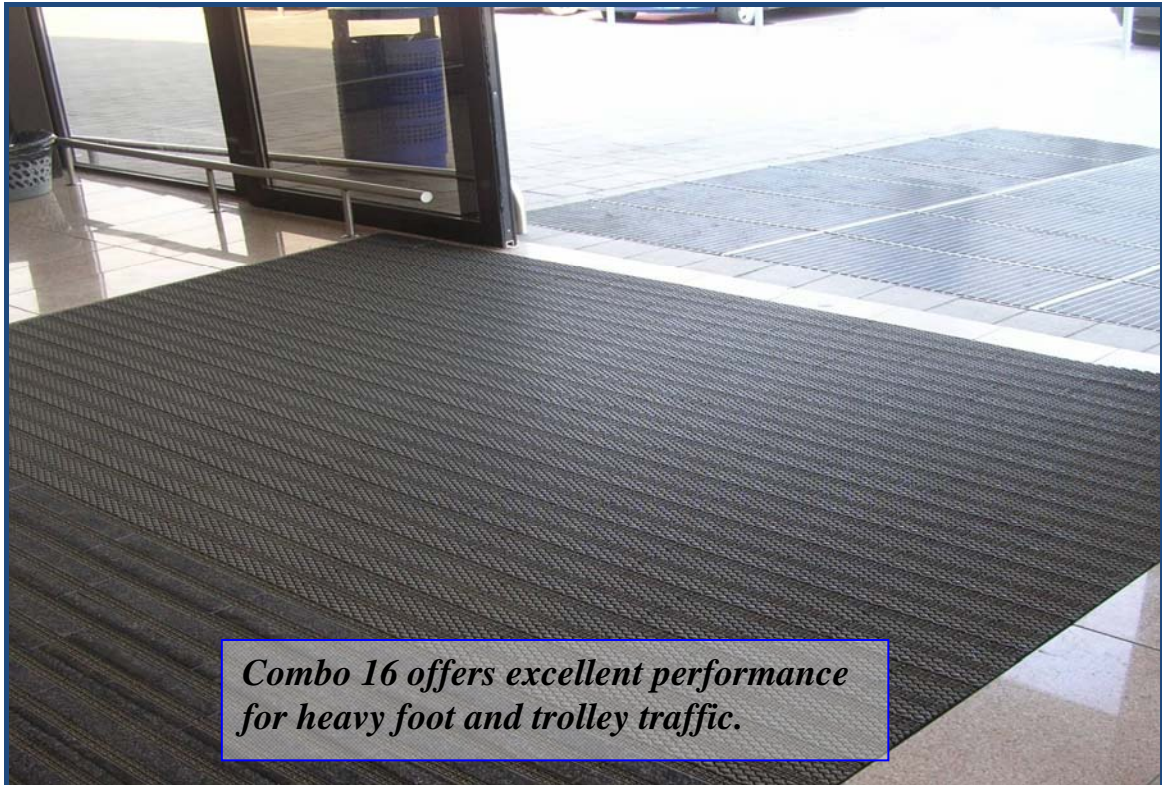
Tel: +358 9 290 22 20

info@muovihaka.com

Fax: +358 9 250 48 07

www.muovihaka.com

## COMBO 16 mm



*Combo 16 offers excellent performance for heavy foot and trolley traffic.*

### Interlocking modular tiles

Combo 16 mm tiles are very easy to cut to size and shape. Tiles can be installed in minutes, without the use of special tools. Interlocking modular tiles allow you to create an entrance mat of any length and width.

### Good drainage and non-slip surface

Combo 16 mm has slip resistant surface pattern and it offers maximum drainage. Open grid construction allows water to pass through the mat, providing safe and dry surface.



*Combo 16 heel proof interlocking tile is fully compatible with the Integra 16 carpet tile.*

SPECIFICATIONS:	
Material:	UV-resistant vinyl. Resists most chemicals and oils. 100 % recyclable.
Tile size:	400 x 140 mm
Packaging:	20 tiles / pkg (= 1,07 m <sup>2</sup> )
Height:	16 mm
Weight:	9,8 kg / m <sup>2</sup>
Colour:	Dark grey, black
Temperature resistance:	-20°C - +70°C
Rolling load:	KfB dynamic test: 350 kg per wheel
Slip resistance:	DIN 51130: R10
Fire classification:	EN 13501: Bfl - s1
Emissions:	ISO 16000-9: TVOC class A+

### Easy maintenance

Combo 16 mm entrance mat is inexpensive to clean by vacuum cleaning or hosing down.

Combo is easy to roll up for maintenance. Dirt that falls through the mat can be simply vacuum cleaned from the floor underneath.

### Muovihaka

Kuusimäentie 12, 01900 Nurmijärvi, FINLAND

Tel: +358 9 290 22 20

info@muovihaka.com

Fax: +358 9 250 48 07

www.muovihaka.com