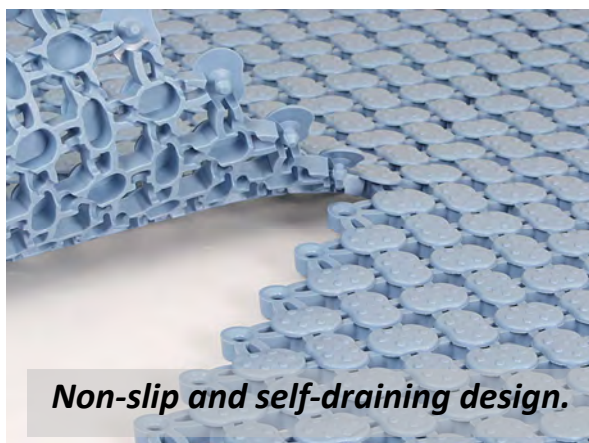


Lagune – interlocking modular mat for wet areas

Lagune is ideal for swimming pool surrounds, showers, spas, saunas and changing rooms. Unique design allows water to easily drain off, providing slip resistant, safe and dry surface. Lagune is warm, comfortable and ideal with barefoot traffic.

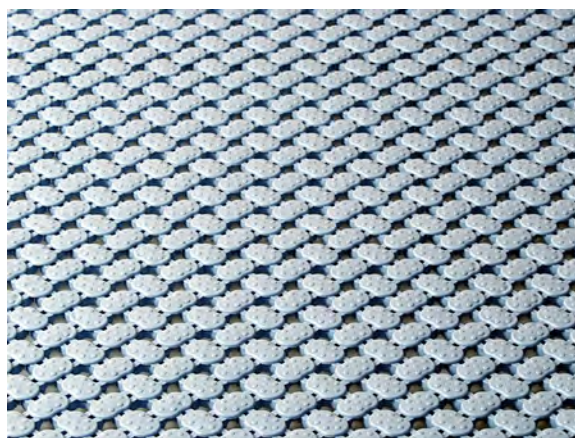


Lagune – Interlocking tile



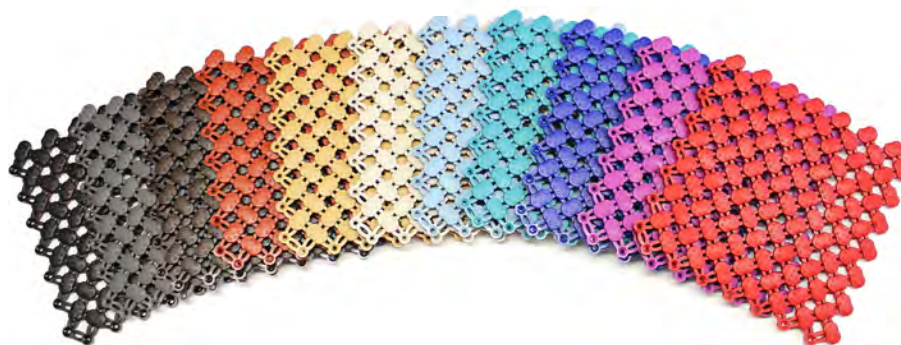
Hygienic

Lagune is treated with an anti-microbial additive for protection against the growth of mould, mildew, fungi and odour-causing germs. Lagune is designed to prevent the development and growth of bacteria and it resists also body oils and chemicals.



Non-slip and safe surface

Lagune offers exceptional drainage and comfort all in a modular mat. Curved design of the surface promotes immediate drainage. Unbacked construction allows water to pass through the mat, providing safe and dry surface.



SPECIFICATIONS:

Material:	Antibacterially treated UV-resistant soft vinyl. 100 % recyclable.
Tile size:	200 x 200 mm
Packaging:	25 tiles / pkg (= 1 m ²)
Height:	9 mm
Weight:	4,1 kg/m ²
Color:	Black, dark grey, brown, terracotta, dark beige, pastel blue, turquoise, dark blue, purple, red
Temperature resistance:	-35°C - +70°C
Slip resistance:	DIN 51097: A + B + C DIN EN 13451/15288-1: 30°
Fire classification:	EN 13501: Cfl - s1
Emissions:	ISO 16000-9: TVOC class A+